



Beaufort County Public Works Stormwater Infrastructure Project Summary

Project Summary: Token Lane

Project #: 2011-573

Completed: Jan-11

Narrative Description of Project:

Project improved 1,741 L.F. of drainage system. Cleaned out 883 L.F. of outfall ditch and 858 L.F. of roadside ditch. Installed (1) bleeder pipe. Jetted (1) crossline pipe, (3) driveway pipes and 282 L.F. of roadside pipe.

Material Cost, Rental Equipment Summary, and Labor

Material	Unit	Cost/Unit	Qty	Cost
12" HDPE Pipe	linear feet	\$4.86	20.0	\$97.20
Water	gallon	\$0.01	1,500	\$15.00
Pin Flags	each	\$0.06	27.0	\$1.62
Flagging Tape	roll	\$14.55	0.5	\$7.28
Marking Paint	can	\$3.58	1.0	\$3.58
Excavator Rental				\$705.06
Diesel	gallon	\$2.89	203.1	\$586.96
Gas	gallon	\$2.79	7.0	\$19.53
Labor	hours		212.5	\$4,630.86
Indirect Labor, Services, and Supplies				\$3,220.12
Total Cost of Materials, Rental Equip., and Labor				\$9,287.20

Note: Labor cost includes the employee's salary plus fringe benefits.

Equipment Cost

Item	Asset	Cost/Hour	Hrs.	Cost
CAT 308D Excavator	23514	\$27.58	10.0	\$275.80
Vacuum Truck	22812	\$22.16	7.5	\$166.20
Lowboy	23118	\$34.64	4.0	\$138.56
Dump Trucks		\$13.31	40.0	\$532.40
Pickup Trucks		\$4.12	53.0	\$218.36
Total Equipment Cost				\$1,331.32

Cost/hour excludes fuel cost.

Total Cost: \$10,618.52

Site Photographs

Before

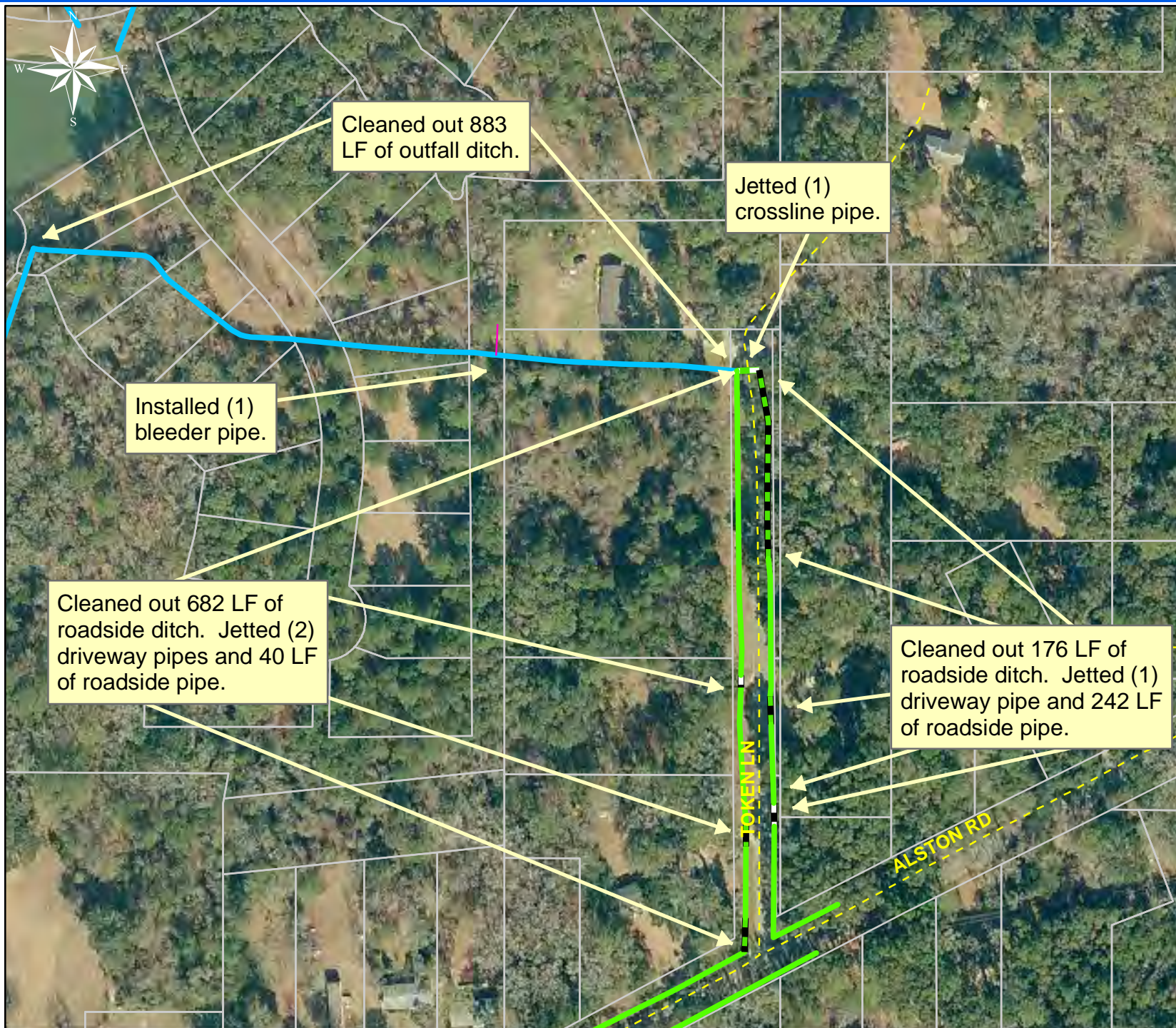


During



After





Project: Token Lane

Activity: Drainage Maintenance

Project #: 2011-573

Township: Lady's Island

Completed: January 2011

Legend

Drainage Type

- River
- Stream
- Outfall
- Lateral
- Lateral Pipe
- Roadside
- Roadside Pipe
- Crossline
- D/W
- Access
- Piped
- Bleeder
- Parcels

0 50 100 200 300 400 Feet

1 inch = 164 feet

Prepared By: BC Stormwater Management Utility
Date Print: 3/18/11
File: C:/sethdata/projects/projectmaps/Token Ln 2011-573